



**b2iNNObiz** growth fuels the future of innovation and technology through the **iNNOBIZ1 Economic & Social Impact Investment Forum**, the **premier gateway to IGNITE** Innovative Global and Neighborhood Intelligent Team Engine and the

## LEADING TECHNOLOGY

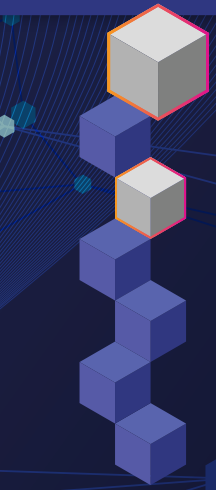
# ©iNNOHubs-in-Cubes (iNNOHiC) innovative and intelligent Ecosystems Infrastructure (iEI)

### "The Infrastructure of Knowledge"

as a human-centered force driving regional development and technology transfer for transitioning **from Intelligent Cities to Intelligent Villages.**



The **Innovative Technology iROOM** creates advanced intelligent space and is designed for rapid installation using SIP panels with **embedded RFID technology**. It revolutionizes knowledge access, offering a seamless, tech-driven environment for efficient data exchange and innovation.



### Legal base

NCNDA, JCRPA, JOA, 2T JOA, SVT JOA, IAI JOA, FarmIn/FarmOut JOA, 2T Project Company, iNNOBIZ1 Ecosystem Franchise Agreement

Apply by September 13, 2025 [forum.innobiz1.com/CH/#signup](https://forum.innobiz1.com/CH/#signup)



## iNNOBIZ1 Ecosystem Members



# Joint Operation of Impact-Ventures Leaders

Meet the **IGNITE** Leaders and **Leading Technology** Investors in the **2<sup>nd</sup> iNNOBIZI Economic & Social Impact Investment Forum**

Membership benefits you gain from having access to **IGNITE** and **iNNOHubs-in-Cubes**

## ADVANTAGES OF MEMBERSHIP IN THE iNNOBIZI ECOSYSTEM

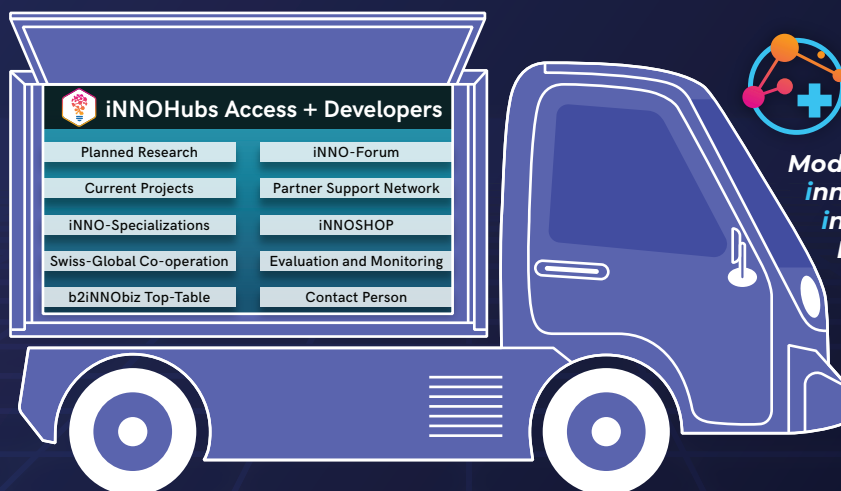
Members of the iNNOBIZI Ecosystem gain **Effective Social Capital (ESCAP)**, a valued asset with **fiat-denominated economic significance**. ESCAP enables income generation during tokenization and enhances financial stability. Additionally, its presence reduces investment risks, strengthens decision-making, and optimizes resource allocation, fostering sustainable innovation and long-term financial viability within technological and innovation-driven frameworks.

### INVENTORS & INNOVATORS

- ▶ **IGNITE** transforms sunk-cost of the inventor or innovator into **recoverable past cost**, through an **innovative integrated Structural Procedure (ISP) for intellectual property valorization**.
- ▶ The inventor and innovator join an **IGNITE Investment Team** to create a **transferable technology**.

### INVESTORS

- ▶ **IGNITE** increases the **Social Value of Innovation/Technology** mitigating the investment risks. Due to the high SVI/T the investors get the option for collateral trade deals generating additional income from investment.
- ▶ Investing in ecosystem **capital is driving unique solutions with social impact** which **enable the sustainable transferable ecosystem as technology**.



*Modular,  
innovative, and  
intelligent  
Point-of-Care  
(iNNOPoC)*

### Got questions?

- ✉ [secretariat@innobizl.com](mailto:secretariat@innobizl.com)
- ☎ +41 79 557 07 69
- 🌐 [forum.innobizl.com](http://forum.innobizl.com)

Apply by  
**September 13, 2025**

